



Today's global business environment is more demanding and fast-paced than ever before. Companies are delivering increasingly complex products — with shorter lifecycles and lead times — to customers demanding faster results and more responsive service. Globalization and outsourcing have added to the complexity, resulting in more diversified supply chains. The number of supply chain partners, as well as the amount of geographic dispersion, has increased dramatically as a result.

"Siloed" departments, systems, and partnerships can severely limit a company's ability to view material throughout the supply chain. To ensure that their order-to-delivery performance is not impacted, companies need to have greater coordination and visibility into the material flow across the supply chain.

Increase Global Visibility

Now with i2 Supply Chain Visibility™, companies have access to global visibility into all of their critical supply chain activities and partnerships.

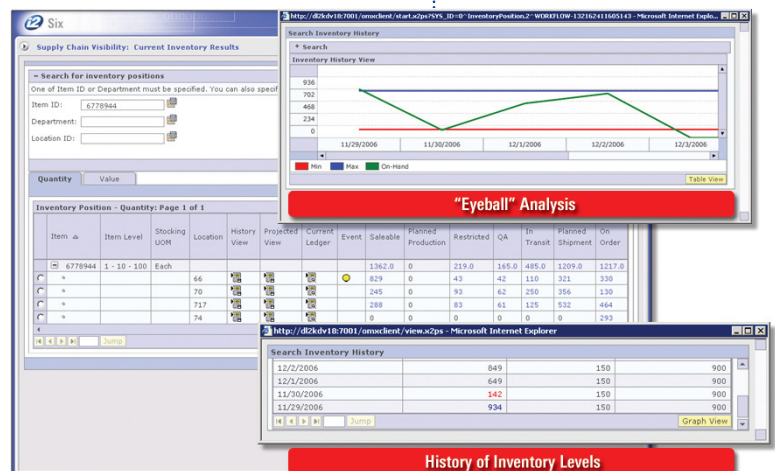
This proven solution allows organizations to respond more quickly and effectively to a wide range of unplanned and potentially disruptive supply and demand events. Supply-related events can include production bottlenecks, fulfillment delays such as port strikes and customs delays, and supplier shortages. Demand-side events might include customer orders that are greater than forecasts or changes to orders that have already been placed.

i2 Supply Chain Visibility is designed to manage these events, assess their impact, and orchestrate a rapid and practical resolution while providing a unified view of the supply chain. The solution can also incorporate packaged business process packs for replenishment, fulfillment, and manufacturing, and these packages can be configured to meet customer-specific requirements.

i2 Supply Chain Visibility also enables companies to close the loop between traditional planning and execution processes. This market-proven solution can help companies better understand orders, inventory, and logistics data.

"You can't buy these programs that are off the rack and the flavor of the month. In i2, we believe we have the right solution, and we believe we have the right partner."

—Chuck Dow
Senior Director of Transportation
and Logistics
Best Buy



History of Inventory Levels

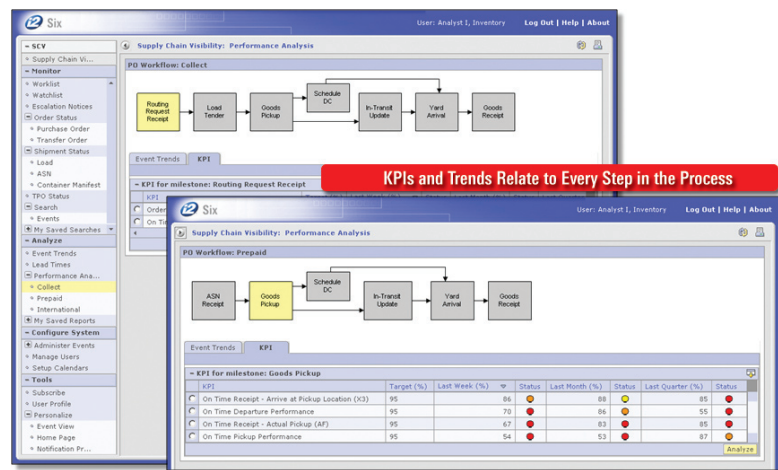
Monitor Inventory Levels

Powerful Functionality

This solution incorporates pre-built workflows that integrate data across order management, warehouse management, logistics, and inventory applications for the flow of both domestic and international goods. A series of predefined, extensible events and exceptions support each workflow and a visual "studio" allows workflows and events to be extended, configured, and customized to meet specific enterprise requirements. i2 Supply Chain Visibility delivers a robust technology that is scalable and extensible, and that operates smoothly in a distributed computing environment.

Extensive Capabilities

- Inbound and outbound tracking of order, inventory, and logistics flows
- Domestic and international flows that track multi-leg and multi-modal shipments
- Visibility into exceptions and events across orders, inventory, and shipments
- Role-based views for buyers, suppliers, analysts, and 3PL vendors
- High degree of permissibility and privacy controls
- Track-and-trace inventory across multiple locations
- Configurable event detection mechanism and customizable event management workflows
- Event chaining such as linking of related events, audit trails, context-based problem prioritization and extensive notification options including e-mail, e-mail digest, pagers, and cell phones available
- Calendars, internationalization (i18n), and multi-time zone support enabled
- Integration to underlying applications for intelligent resolution and to prevent event recurrence
- Root-cause, event trend, and performance analysis capabilities
- Rich event library with over 100+ out-of-box events supported
- Fast, web-based supplier enablement and transaction support



KPIs and Trends in the Context of Process

Benefits

- Exception-based management
- End-to-end supply chain visibility and event management tools
- Customer-specific solutions for replenishment, fulfillment, and manufacturing
- The ability to forecast and respond to supply/demand events
- The option to move from calendar-based to event-driven planning and re-planning
- Increased employee productivity
- Reduced process, personnel, and expediting costs
- Improved customer, supplier, and partner communications
- Real-time decision support

For more information on i2 Supply Chain Visibility and other i2 solutions, visit www.i2.com.



The Supply Chain Company®

11701 Luna Road
 Dallas, Texas 75234, USA
 Phone 1.877.926.9286
 Email info@i2.com
 Web www.i2.com